

NEW PLANS FROM \$599,900



Lonergan Homes
We Build On Our Reputation.

SPENCERVILLE WOODS

Presented by Lonergan Homes, these 4 prime building lots offer everything you'd expect and a whole lot more. Lonergan Homes "Included Features" exceed most builder's upgrades. See our *Included Features* sheet for details.

2 WOODED LOTS AVAILABLE

*Custom Homes by award
winning builder
LONERGAN HOMES!*

**CALL TIM DOBRY
DIRECT FOR
MORE INFO!**

443-623-8494 (cell)

*Lonergan Homes
has a sales center
in Bowie, MD. Call
me for a personal
custom home
consultation.*



For directions to
lots search:
1601 Spencerville Road
Spencerville, MD 20868

For More Information Call:

Tim Dobry

443-623-8494 Information Center

timdobry@hotmail.com



MHBR #1170

Sales By: Execuhome Realty 443-757-3400 Broker 6170 Hunt Club Rd. Elkridge. MD 21075



2 WOODED LOTS AVAILABLE. LOT 2 & LOT 3 EACH OVER ONE ACRE!

Choose from our plans or design your own custom home.

The Holland	\$599,900
-------------	-----------

The Braxton "A"	\$654,900
-----------------	-----------

The Braxton "B"	\$662,900
-----------------	-----------

The Braxton "C"	\$667,900
-----------------	-----------

The Fitzgerald "A"	\$719,900
--------------------	-----------

The Fitzgerald "B"	\$725,300
--------------------	-----------

The Fitzgerald "C"	\$739,900
--------------------	-----------

The Calloway "C"	\$834,900
------------------	-----------

Special included features at Spencerville Woods:

FULL BRICK FRONTS, GRANITE COUNTERTOPS, 42" MAPLE CABINETS, GAS FIREPLACE, HARDWOOD FLOORS AND CERAMIC TILE, BASEMENT EXIT, TWO TONE PAINT, OAK MAIN STAIRCASES, GOURMET KITCHEN AND MUCH MORE!!!

Call: Tim Dobry
443-623-8494

WWW.LONERAGANHOMES.COM
timdobry@hotmail.com

Effective December 5, 2010 and
subject to change without notice



MHBR# 1170



INCLUDED FEATURES

SPENCERVILLE WOODS

Interior Features:

- Secondary rear staircase (per plan)*
- 9' ceilings on main level
- Oak main staircase with handset pickets and custom carpet runner *
- First floor library/home office (per plan)*
- 42" gas fireplace including oak mantle and marble surround*
- Custom 2 tone paint throughout*
- Two story open foyer with hardwood floor
- All hardwood is sanded and stained onsite*
- Oak handrails rails and pickets, all sanded & stained onsite*
- Oversized crown moulding in living room, dining room and foyer
- Two piece chair rail and shadow box moulding in dinning room*
- Cased windows on main & second level*
- "Classique" interior doors*
- 12" X 12" ceramic tile or hardwood in kitchen
- Pull down stairs to attic*
- Brushed nickel interior hardware*

Gourmet Kitchen:

- Granite countertops with undermount double sink*
- 42" maple kitchen cabinets*
- Crown moulding trim on cabinets*
- Complete GE Appliance package
 - Gas downdraft cooktop in center island
 - 25 c.f. side by side refrigerator with ice & water dispenser in door
 - 30" double wall oven*
 - Quiet-wash dishwasher
- Recessed light package in kitchen*
- Insinkerator disposal
- Moen pull out faucet with vegetable sprayer*

Luxury Bathrooms:

- Owner's bath suite with garden tub and glass enclosed shower with seat (per plan)
- Ceramic tile in all full baths*
- Powder room with pedestal sink and hardwood floors
- Brushed nickel fixtures in owner's bath and powder room*
- Cultured marble vanity tops
- Moen *Kingsley* faucets in all Baths*

Exterior Features:

- Brick front with decorative quoins* (per plan)
- 2 car garage w/oversized 8' insulated doors*
- 30 year architectural shingles
- Walkout basement exit*
- Maintenance free beaded siding
- Thermal tilt-in windows with architectural integral grills and screens
- Drywall garage walls and ceiling*
- Asphalt driveway
- Professionally landscaped yard
- Seamless gutters and downspouts
- Public water and sewer
- Natural gas heat

Electrical Features:

- Silver package tec wiring*
- 6 cable and 8 telephone pre-wires*
- Ceiling lights in all bedrooms and library*
- Progress lighting decorator light package

Energy and Safety Features:

- Two zone gas heat (NO HEAT PUMPS)*
- Central air conditioning
- 75 gallon water heater*
- Insulated double front door with brushed nickel handle set*
- Extensive energy-efficient insulation and air filtration package
- Fire sprinkler system
- Smoke detectors on all floors
- Termite soil treatment

Warranty Plan:

- Pre-construction orientation
- Pre-drywall inspection
- Pre-settlement walk-through
- 90 day service walk-through
- 1 Year builder warranty plus 1/10 structural warranty

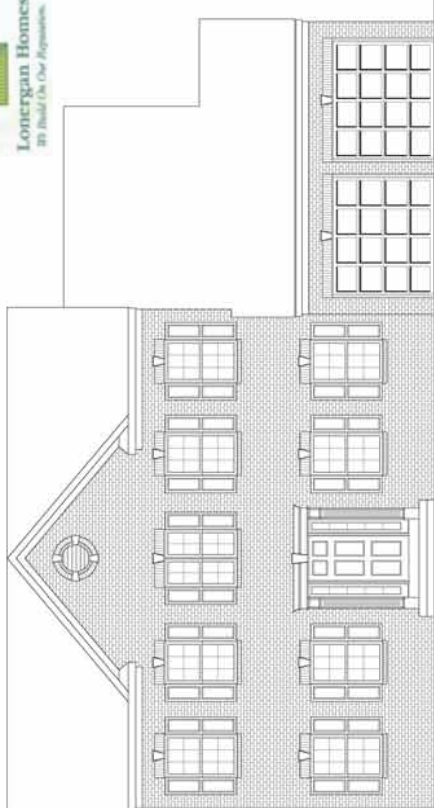
NOTE: All renderings are for illustrative purpose only and may contain optional items. These illustrations are not part of the contract. Dimensions, features, and specifications are deemed to be accurate but not guaranteed and subject to change without notice. Please see Community Salesperson for more complete details and general information.



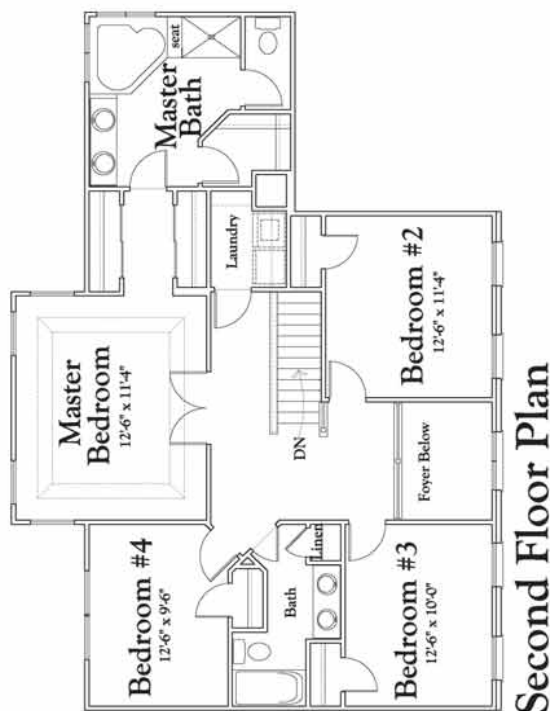
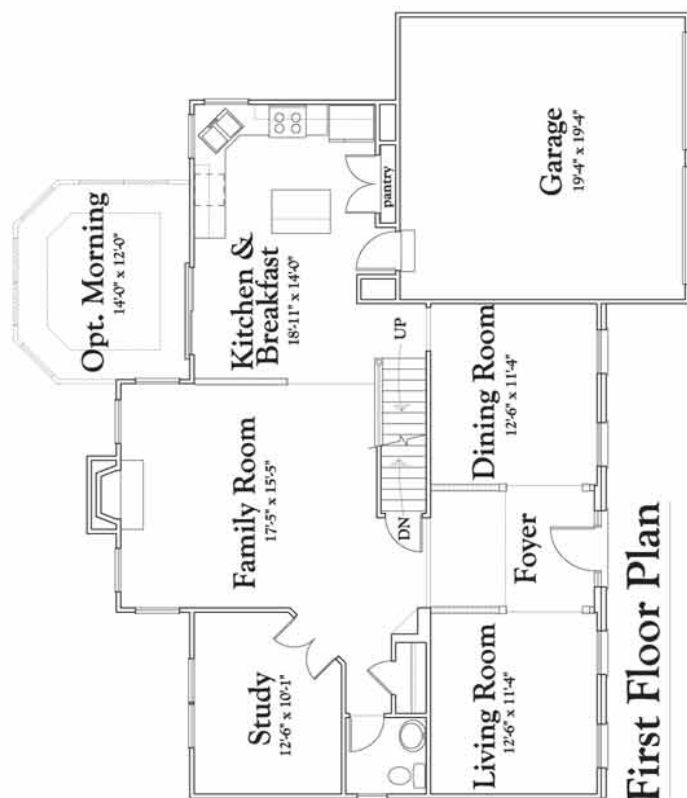
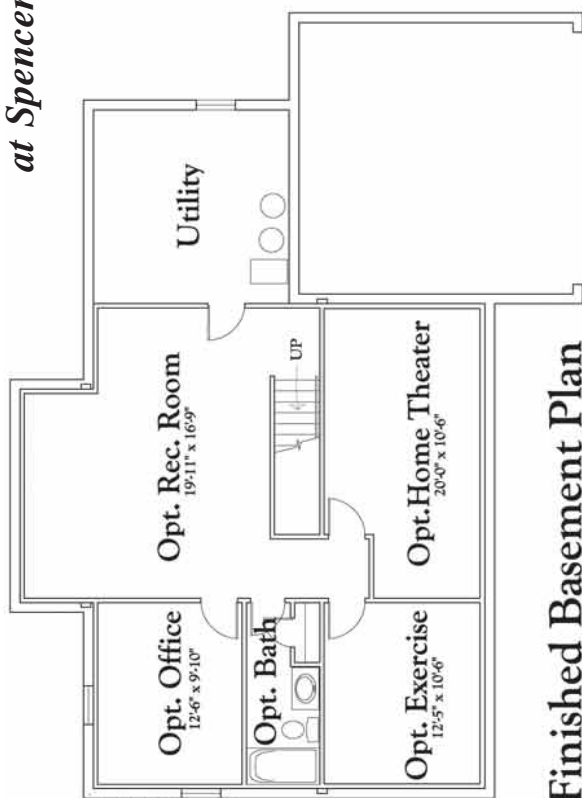
MHBR No. 1170

The Holland

at Spencerville Woods



HOLLAND ELEVATION



NOTE: All renderings are for illustrative purpose only and may contain optional items. These illustrations are not part of the contract. Dimensions, features, and specifications are deemed to be accurate but not guaranteed and subject to change without notice. Please see community sales person for more complete details and general information.



MHBR #1170

The Braxton

at Spencerville Woods



Elevation "C"



Elevation "A"



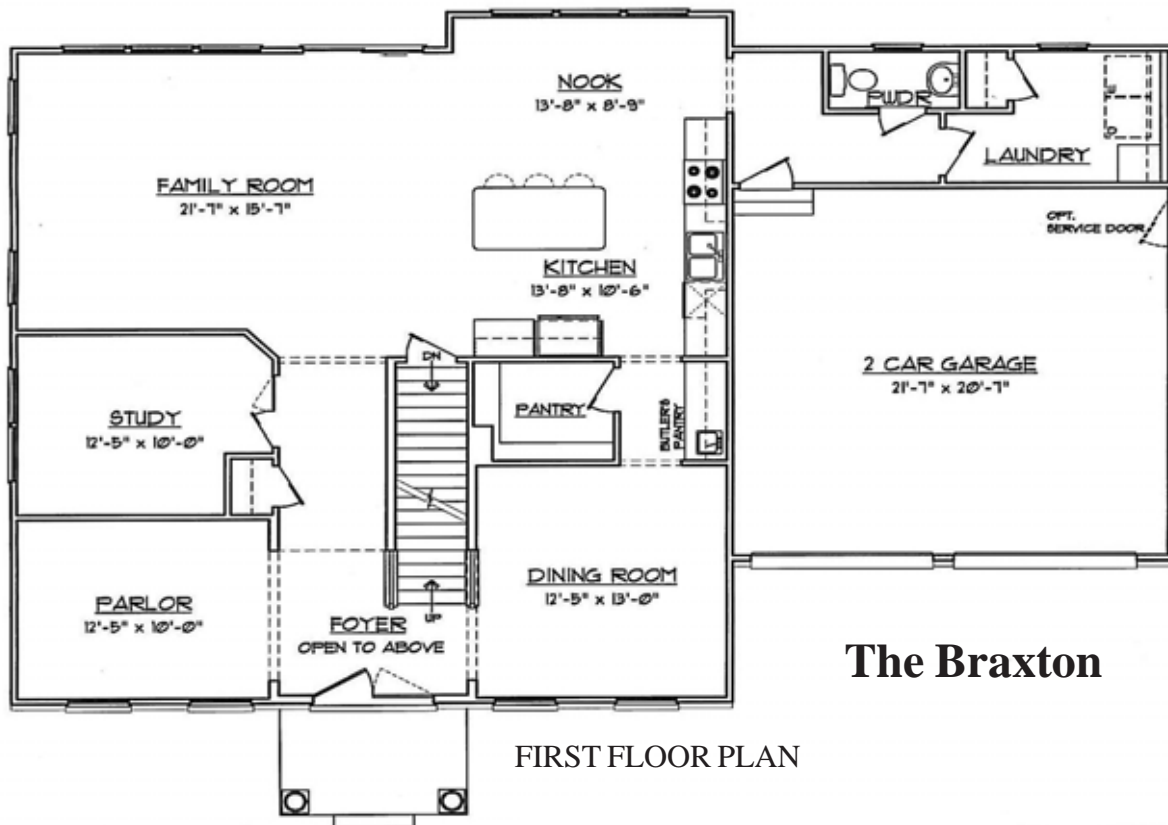
Elevation "B"



NOTE: All renderings are for illustrative purpose only and may contain optional items. These illustrations are not part of the contract. Dimensions, features, and specifications are deemed to be accurate but not guaranteed and subject to change without notice. Please see community sales person for more complete details and general information.

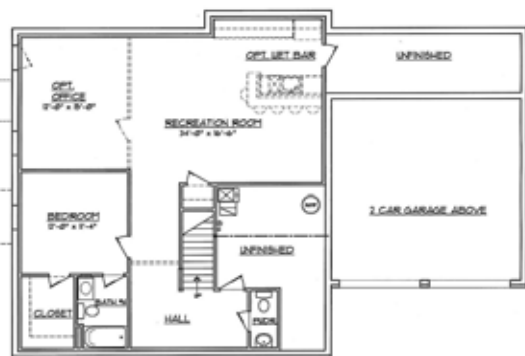


MHBR #1170

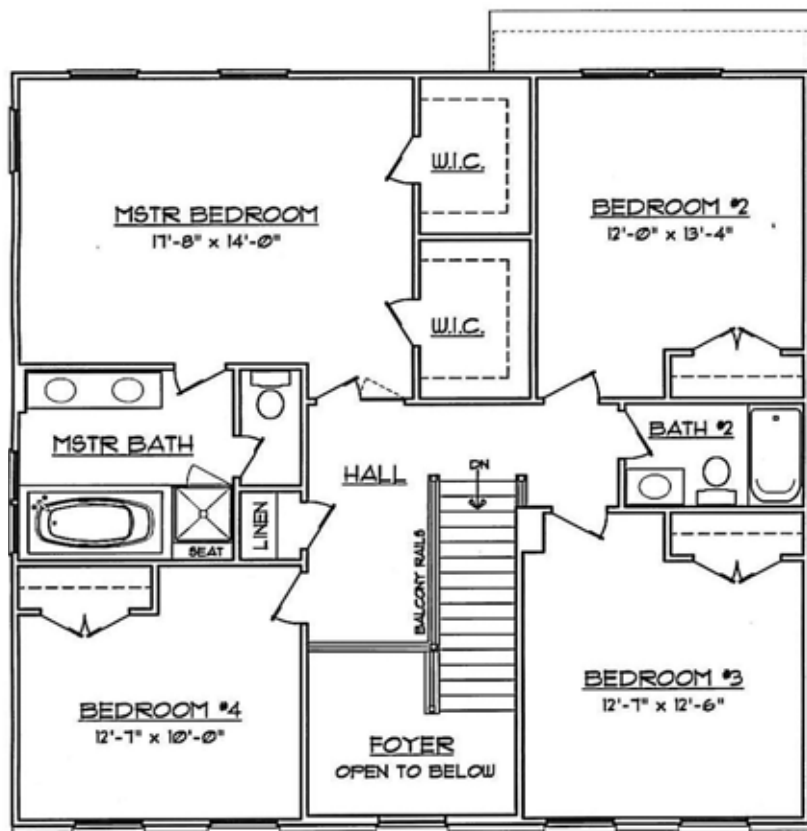


The Braxton

FIRST FLOOR PLAN



BASEMENT PLAN



SECOND FLOOR PLAN

NOTE: All renderings are for illustrative purpose only and may contain optional items. These illustrations are not part of the contract. Dimensions, features, and specifications are deemed to be accurate but not guaranteed and subject to change without notice. Please see community sales person for more complete details and general information.



The Fitzgerald

at Spencerville Woods



Elevation "C"



Elevation "A"



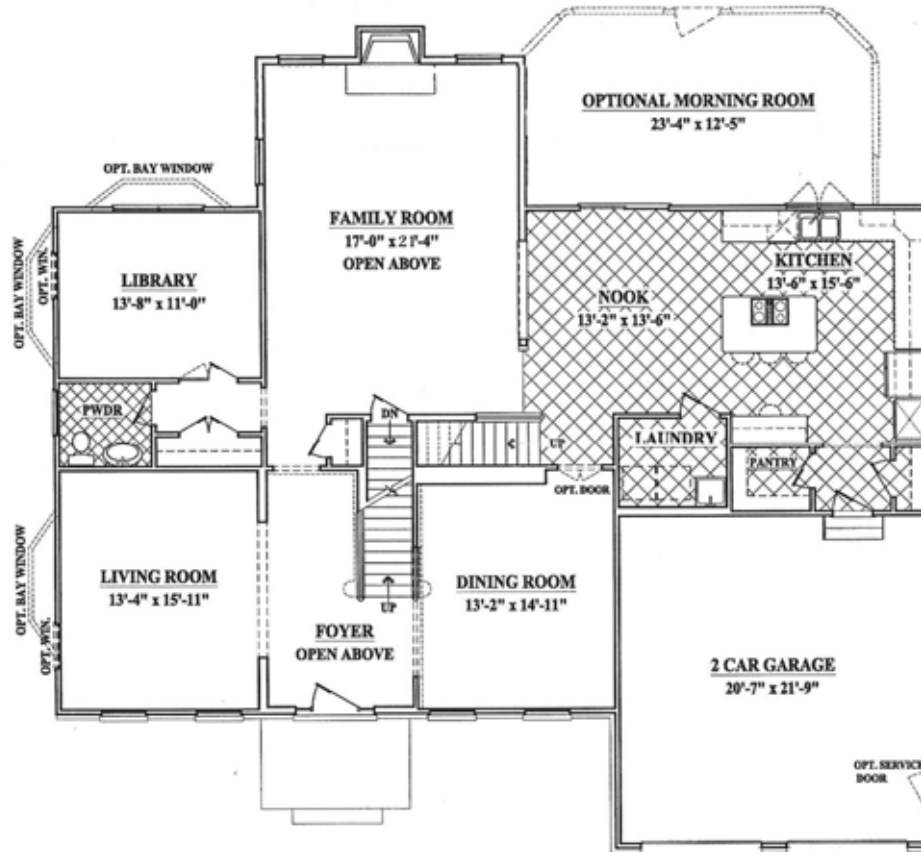
Elevation "B"



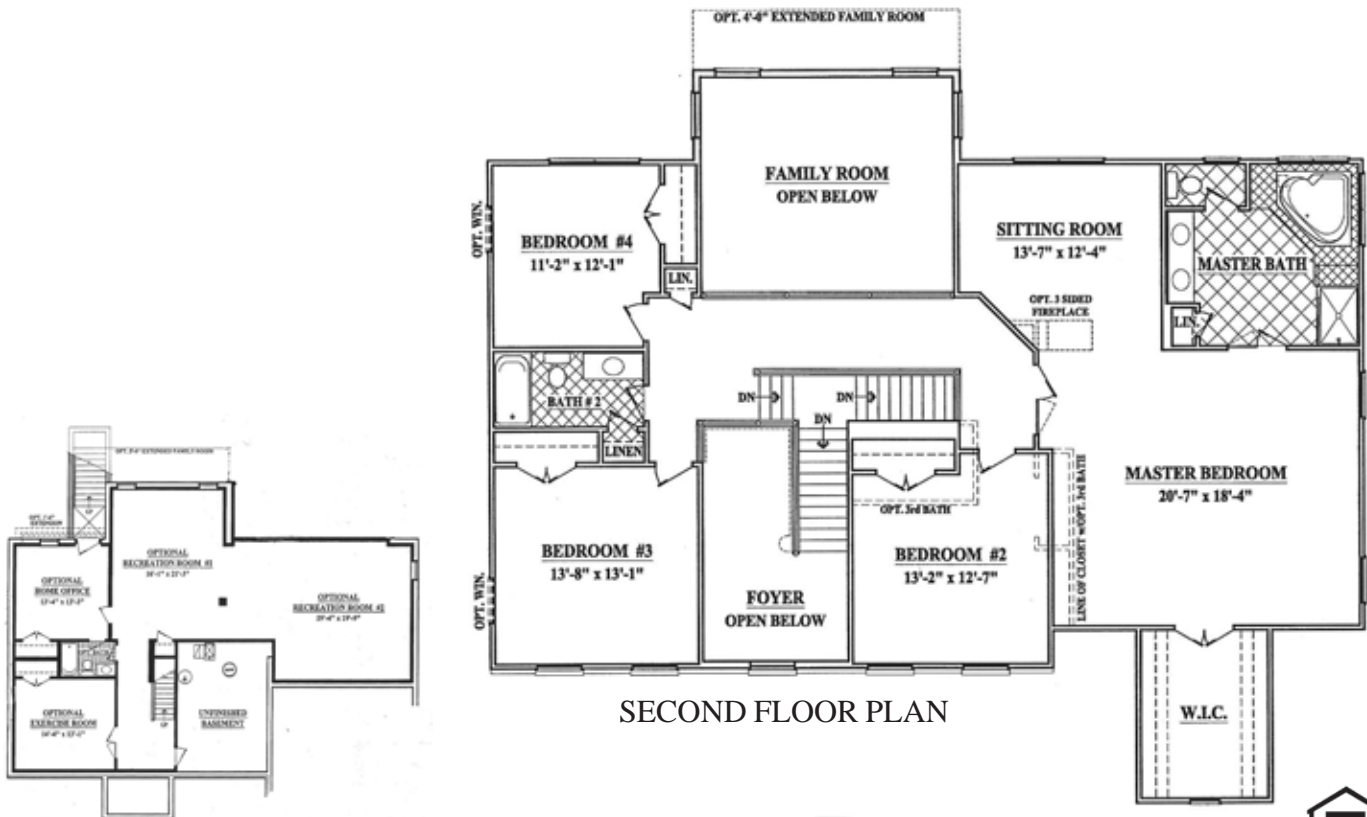
NOTE: All renderings are for illustrative purpose only and may contain optional items. These illustrations are not part of the contract. Dimensions, features, and specifications are deemed to be accurate but not guaranteed and subject to change without notice. Please see community sales person for more complete details and general information.

MHBR #1170

The Fitzgerald



FIRST FLOOR PLAN



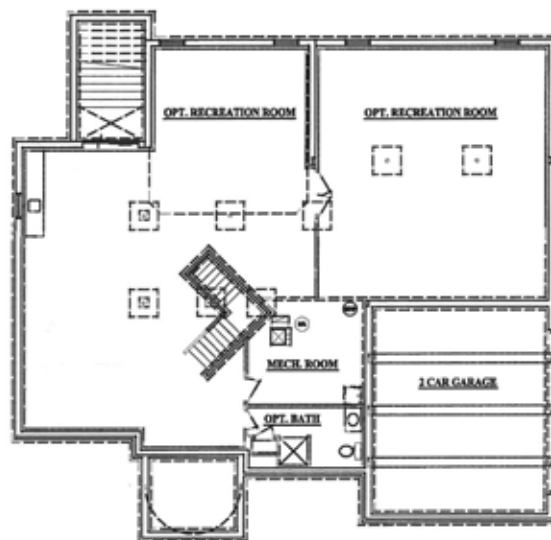
SECOND FLOOR PLAN

NOTE: All renderings are for illustrative purpose only and may contain optional items. These illustrations are not part of the contract. Dimensions, features, and specifications are deemed to be accurate but not guaranteed and subject to change without notice. Please see community sales person for more complete details and general information.



The Calloway

at Spencerville Woods



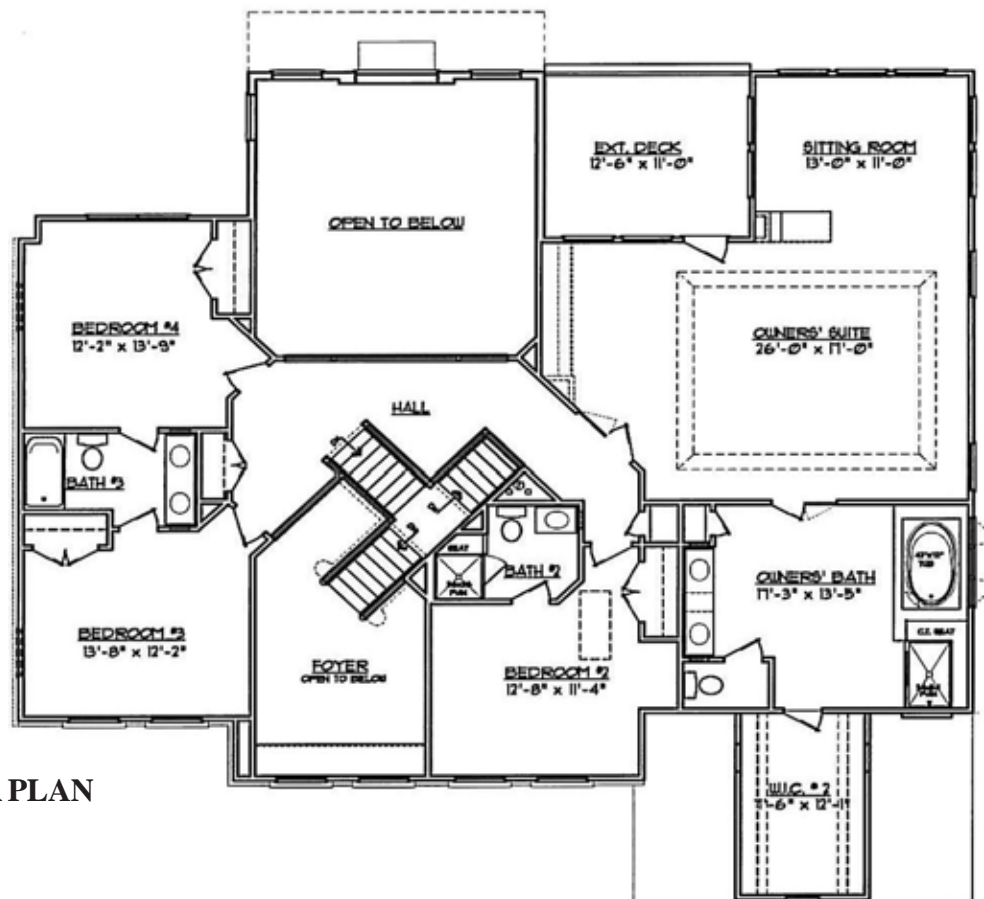
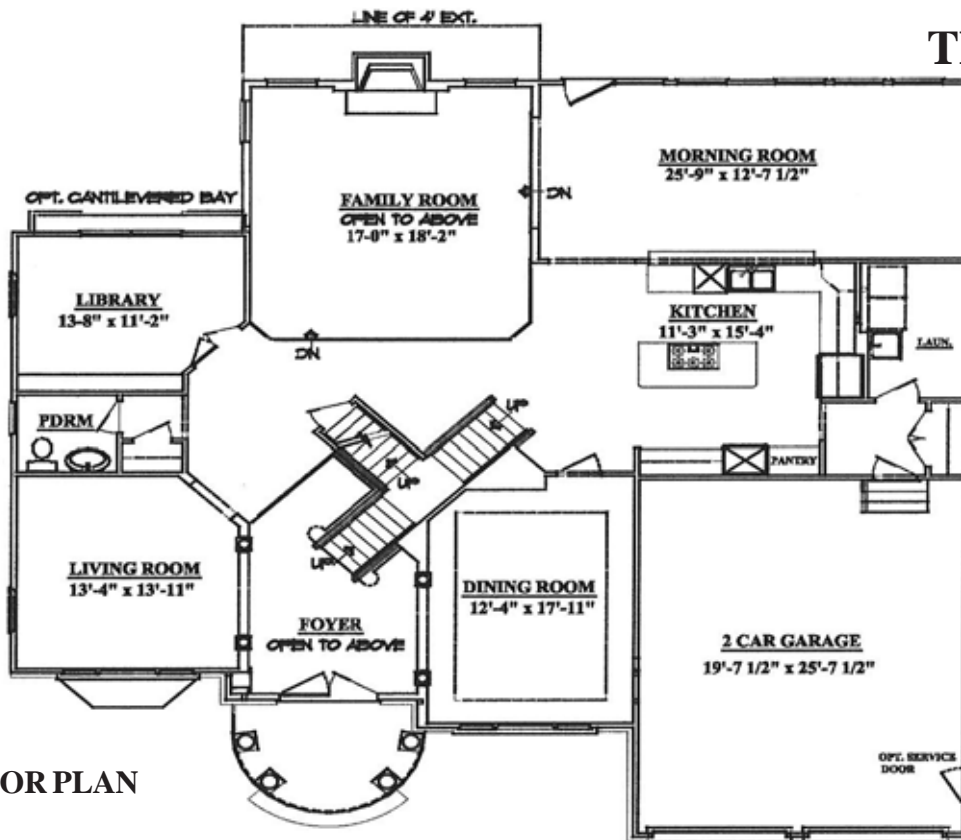
Basement



NOTE: All renderings are for illustrative purpose only and may contain optional items. These illustrations are not part of the contract. Dimensions, features, and specifications are deemed to be accurate but not guaranteed and subject to change without notice. Please see community sales person for more complete details and general information.

MHBR #1170

The Calloway



NOTE: All renderings are for illustrative purpose only and may contain optional items. These illustrations are not part of the contract. Dimensions, features, and specifications are deemed to be accurate but not guaranteed and subject to change without notice. Please see community sales person for more complete details and general information.

Previously built Calloway:



Previously built Calloway:



Calloway rear deck, front porch and main staircase:



Previously built Fitzgerald:



Previously built Fitzgerald:



Lonergan Homes attention to detail:



Recently completed custom Lonergan Homes:



